



2G DSM Fender Brace kit

Congratulations on your purchase. These fender braces are designed to provide a rigid link between the A-pillar and the front chassis, just before the strut tower area, limiting deflection under braking and cornering loads. Like the role of a strut braces is to stop side to side forces, the fender brace works to eliminate vertical movements. This helps maintain the suspensions geometry and greatly improves steering response. Some drilling is requires. Follow the steps before for proper installation.

Step 1: Gather your tools. You will need tools to remove the fenders, a marking tool, and either a stepped bit or hole saw.

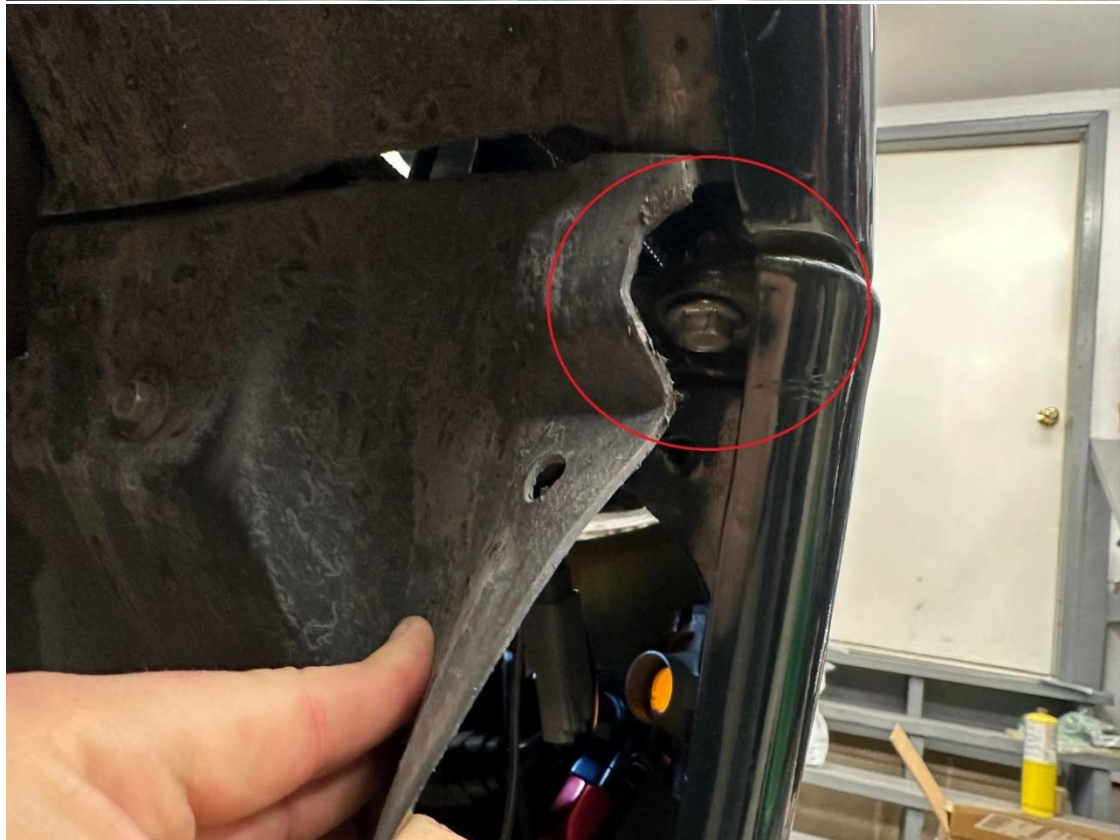
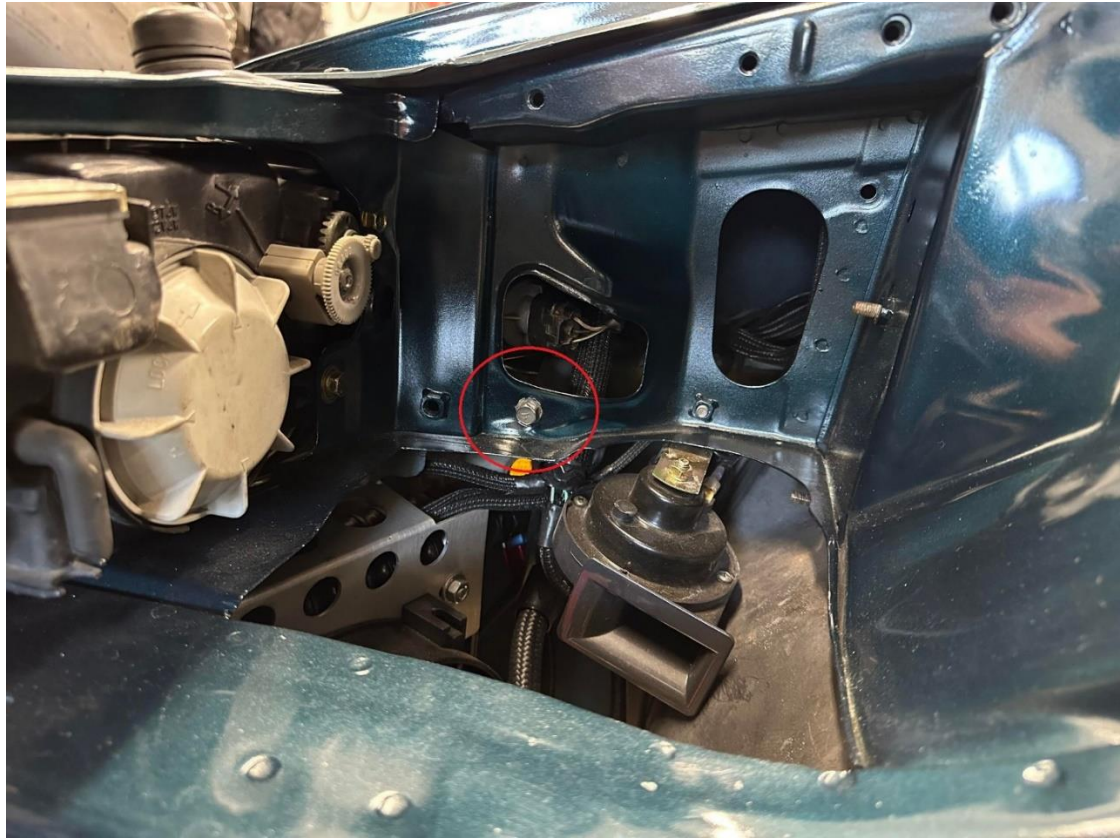


Step 2: Unbolt and remove the fenders from the car. *To do this, you'll need to first remove the side skirt cap and bumper marker light to gain access to the fender's fasteners.*





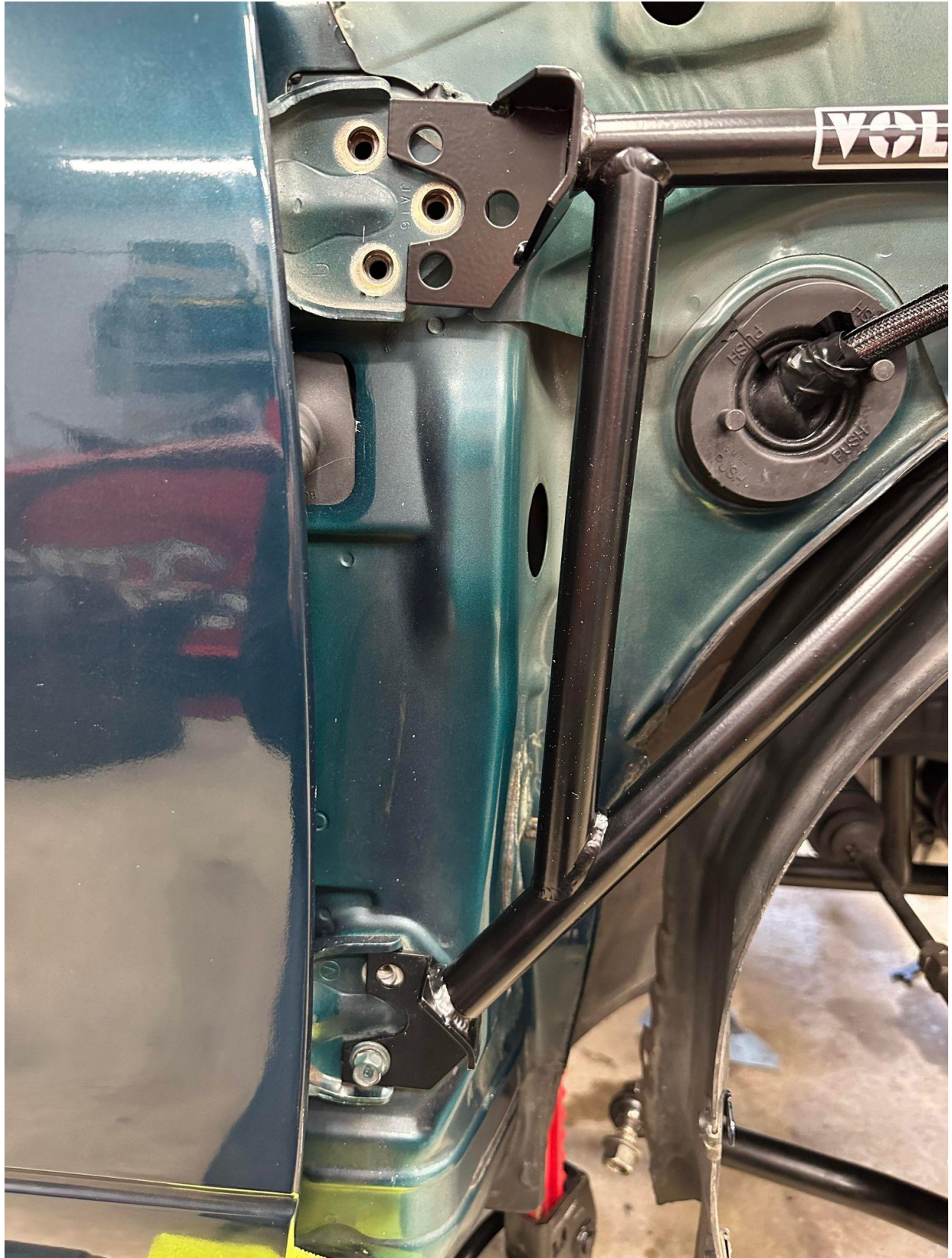




Step 3: Next step is to mock up the fender brace to mark holes to drill. To do this, you'll be removing the bolts from the door hinge. **PRO TIP:** Wedge a shop towel between the door and frame to keep the door from moving and to prevent a paint chip. Mock up the fender brace, and trace your holt holes onto the chassis.





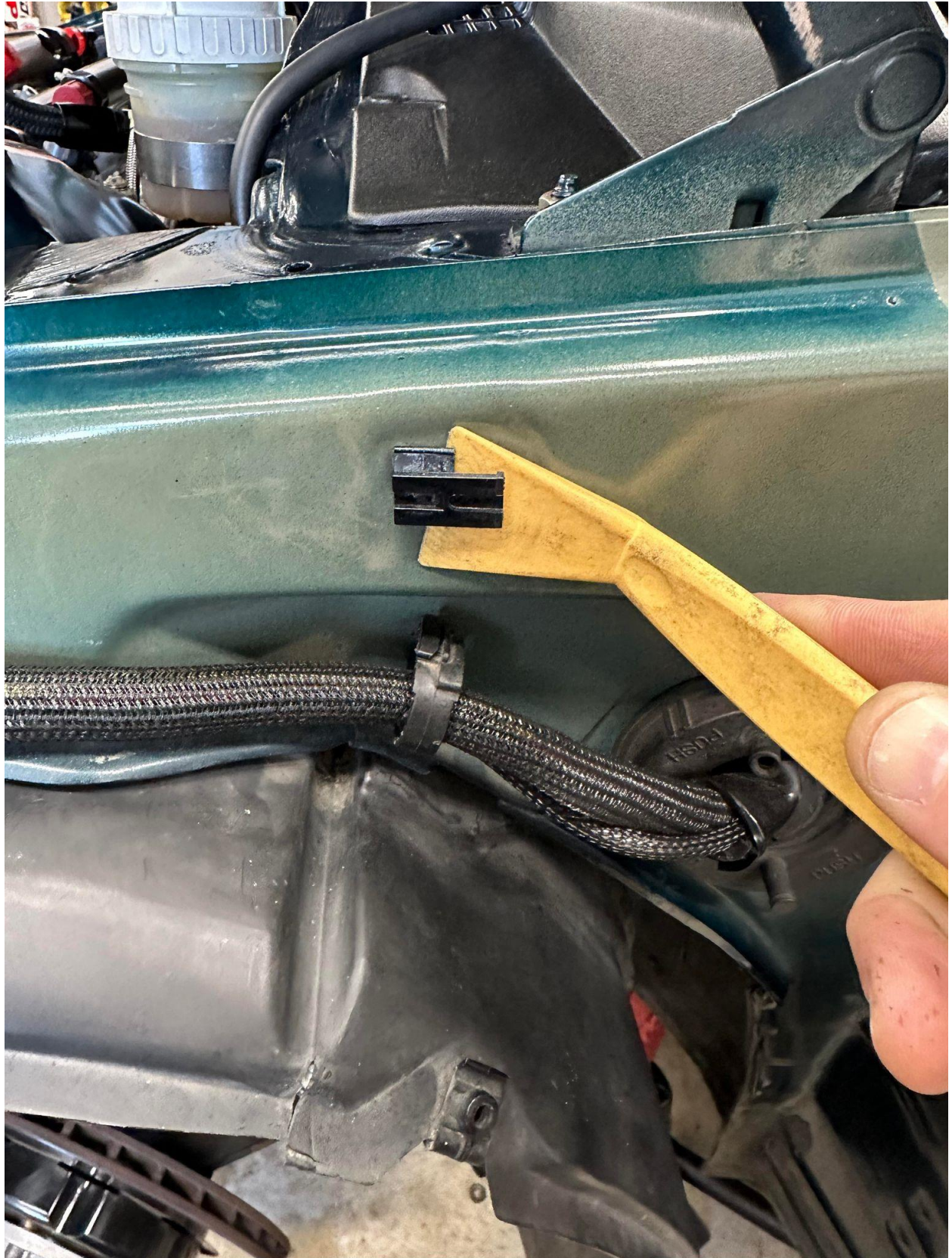




Step 4: Time to drill!! Center punch your two holes and drill using a 11mm or 7/16" size drill bit. Next, locate the hole use to attach the wiring. Unclip and use this as your center and create a 1- 3/8" hole using a hole saw or stepped bit.

PRO TIP: Deburr the holes and consider primer or paint to eliminate future rust/corrosion.





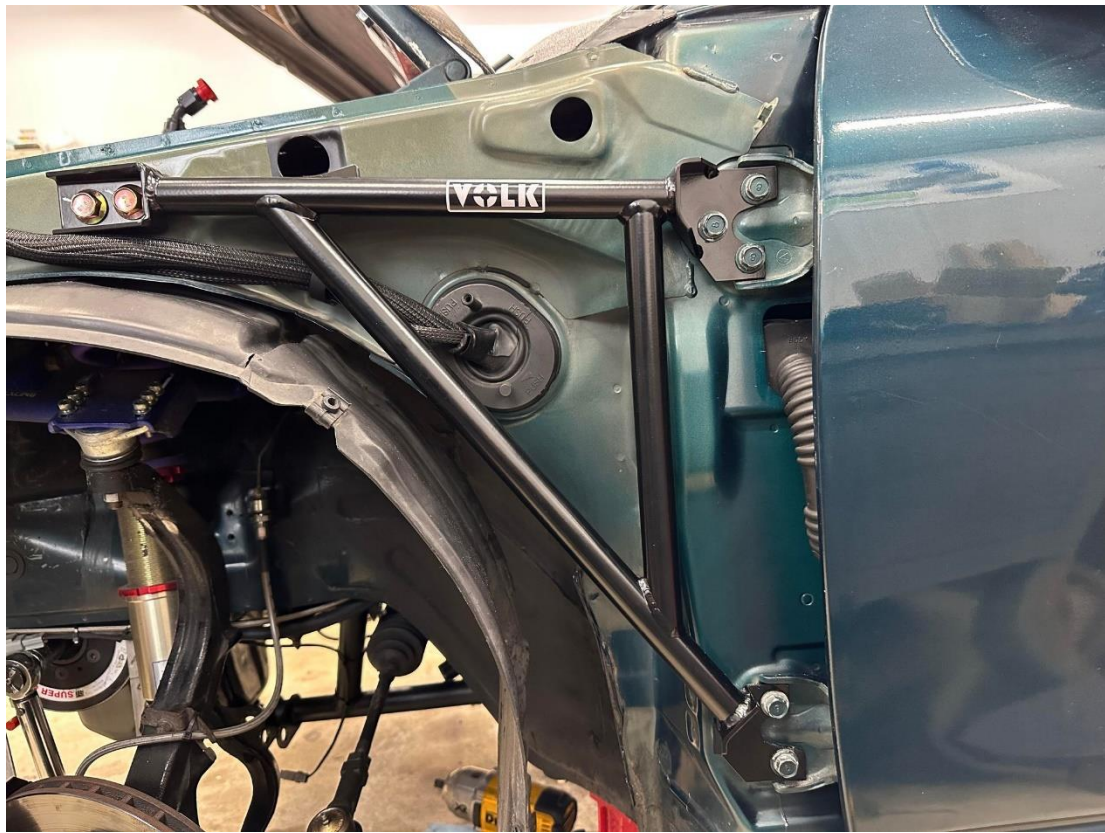






Step 5: Install the fender brackets onto the door hinges. The forward part should have the holes lines up with the ones you drilled. Feed the brackets in through the 1-3/8" hole and align it with the fender brace, and install the bolts.

Reinstall the fenders and side skirt caps. And you're finished!





If you have any questions or concerns, feel free to reach out: info@volkmetalcraft.com